



R-C Thermal Model Parameters

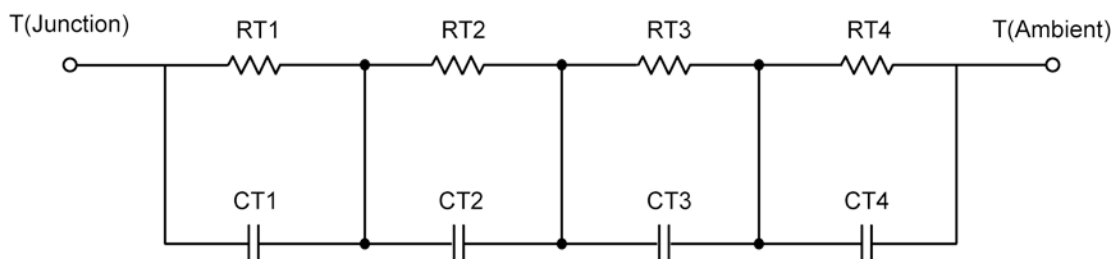
DESCRIPTION

The parametric values in the R-C thermal model have been derived using curve-fitting techniques. These techniques are described in "[A Simple Method of Generating Thermal Models for a Power MOSFET](#)"[1]. When implemented in P-Spice, these values have matching characteristic curves to the Single Pulse Transient Thermal Impedance curves for the MOSFET.

R-C values for the electrical circuit in the Foster/Tank and Cauer/Filter configurations are included.

Note:
For a detailed explanation of implementing these values in P-SPIICE, refer to [Application Note AN609 Thermal Simulations Of Power MOSFETs on P-SPIICE Platform](#).

R-C THERMAL MODEL FOR TANK CONFIGURATION



R-C VALUES FOR TANK CONFIGURATION			
Thermal Resistance (°C/W)			
Junction to	Ambient	Case	Foot
RT1	N/A	110.4441 m	N/A
RT2	N/A	35.8294 m	N/A
RT3	N/A	15.2923 m	N/A
RT4	N/A	238.4342 m	N/A
Thermal Capacitance (Joules/°C)			
Junction to	Ambient	Case	Foot
CT1	N/A	32.4901 m	N/A
CT2	N/A	20.8823 m	N/A
CT3	N/A	20.4302 m	N/A
CT4	N/A	3.4969 m	N/A

This document is intended as a SPICE modeling guideline and does not constitute a commercial product data sheet. Designers should refer to the appropriate data sheet of the same number for guaranteed specification limits.



R-C THERMAL MODEL FOR FILTER CONFIGURATION



R-C VALUES FOR FILTER CONFIGURATION			
Thermal Resistance (°C/W)			
Junction to	Ambient	Case	Foot
RF1	N/A	191.1880 m	N/A
RF2	N/A	170.9134 m	N/A
RF3	N/A	8.2568 m	N/A
RF4	N/A	29.6417 m	N/A
Thermal Capacitance (Joules/°C)			
Junction to	Ambient	Case	Foot
CF1	N/A	2.3755 m	N/A
CF2	N/A	1.4790 m	N/A
CF3	N/A	16.9211 m	N/A
CF4	N/A	369.5905 m	N/A

Note: NA indicates not applicable

Reference:

[1] "A Simple Method of Generating Thermal Models for a Power MOSFET" by Wharton McDaniel and Kandarp Pandya. IEEE / SEMITHERM 2002

